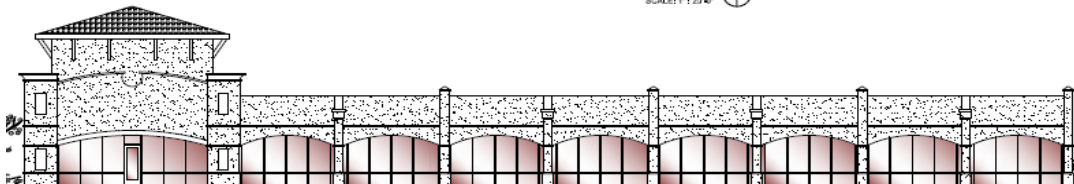
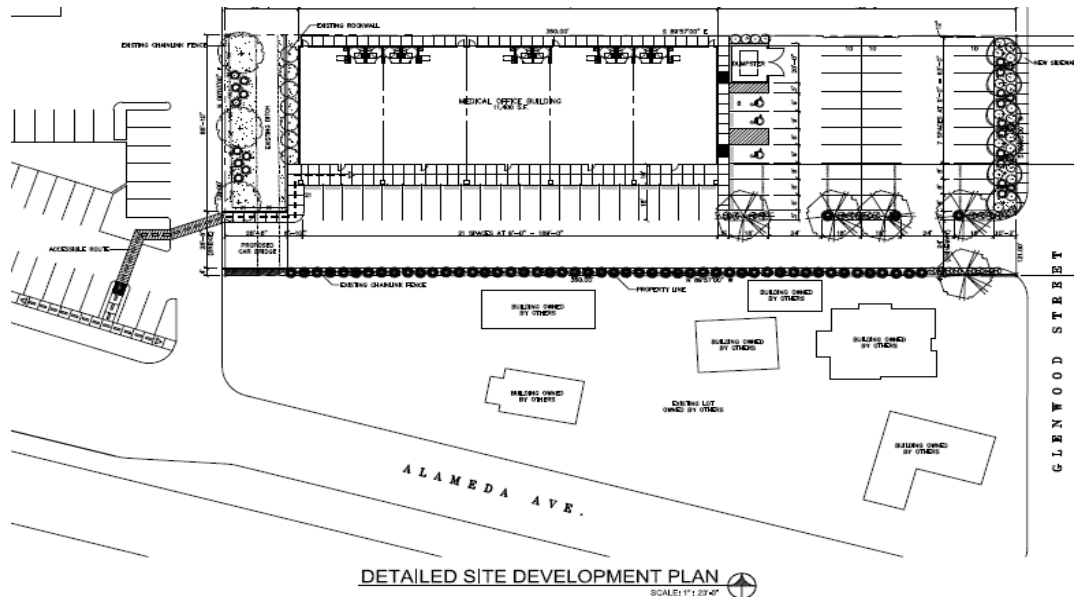


New Outparcel Medical Office Space at Fox Plaza

1000 SF – 6000 SF Available at 200,000 SF Community Shopping Center on 16 Acre Site

El Paso, TX Intersection of Paisano and Alameda Ave.



Major Center Tenants

- Davita Dialysis Clinic
- Fallas Parades, Family Dollar
- Melrose Fashions
- Rent-A-Center, Anna's Linens
- Cricket Cellular, Payless Shoes

2 Blocks from new Texas Tech Medical School
1 Block from County Hospital and State Offices

On-site Management & Leasing:

Jeannette Negrete or Don Schneider
915-779-8424 or 949-888-7000 office
949-632-9040 or 949-300-0690 cell

Demographics and Site Information

4 miles from expanding Fort Bliss military Base
Population 3 miles: 110,111. N.I. Juarez, MX
Population 5 miles: 237,093. N.I. Juarez, MX
Central El Paso, Lower Valley
Vehicle traffic per day: 31,800 (2004 TXDOT)

Broker Coop

Annual Rental Rates: \$18.00-\$20.00 PSF NNN

www.Foxplazamercado.com